

PRENATAL SCREENING

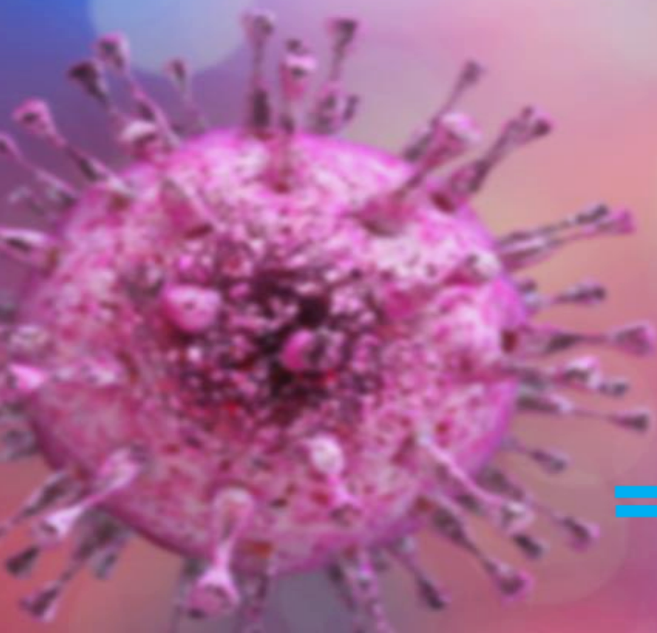


TOXOPLASMA GONDII

RUBELLA VIRUS

CYTOMEGALOVIRUS

HERPES SIMPLEX VIRUS 1, 2, 1&2



Technical specifications

<u>ASSAY</u>	<u>IgG</u>	<u>IgM (Capture System)</u>
Toxoplasma Gondii	Toxo IgG	Toxo IgM
Rubella Virus	RUB IgG	RUB IgM
Cytomegalovirus	CMV IgG	CMV IgM
Herpes Simplex Virus 1	HSV1 IgG	HSV1 IgM
Herpes Simplex Virus 2	HSV2 IgG	HSV2 IgM
Herper Simplex Virus 1&2	HSV1&2 IgG	HSV1&2 IgM

N.B. Capture System:
technology that enhances
assay specificity

Method	ELISA
Sample	Serum or Plasma
Kit format	96 test
Shelf-life	15 months (HSV1, HSV2 and HSV1&2 18 months)
Calibration	Standard curve of IgG assays set on international referenced preparations
Incubation time	Optimized for automation
Automation	Adaptable on the most common ELISA processing systems

DIA.PRO ToRCH panel

Dia.Pro offers a complete ToRCH panel of high quality Enzyme ImmunoAssay (ELISA) for *in vitro* quantitative/qualitative determination of IgG or IgM antibodies to the specific ToRCH organism in plasma and sera.

All kits are **CE** certified and comply with the requirements of IVD Directive 98/79/EC.

Clinical significance

ToRCH is an acronym for a group of infectious diseases that may cause illness in pregnant women and birth defects in their newborns.

ToRCH microorganisms are ubiquitous human pathogens, whose infections continue to be an important health problem in certain patient populations, first of all pregnant women and newborns. All are known to cross the placenta and be teratogenic causing significant fetal and neonatal mortality. They are an important contributor to early and late childhood morbidity.

Diagnostic specifications

- IgG detection: for an indication on the immunization status
- IgM detection: may indicate a current or recent infection. However, low levels of IgM antibodies may occasionally persist for more than 12 months post-infection

